



DOLTONE HOUSE

venue collection + catering

THE LOFT

SYDNEY HARBOUR BACKDROP

Doltone House Jones Bay Wharf
is a unique heritage venue situated on the
restored historic finger wharf at Jones Bay Wharf, Pyrmont.

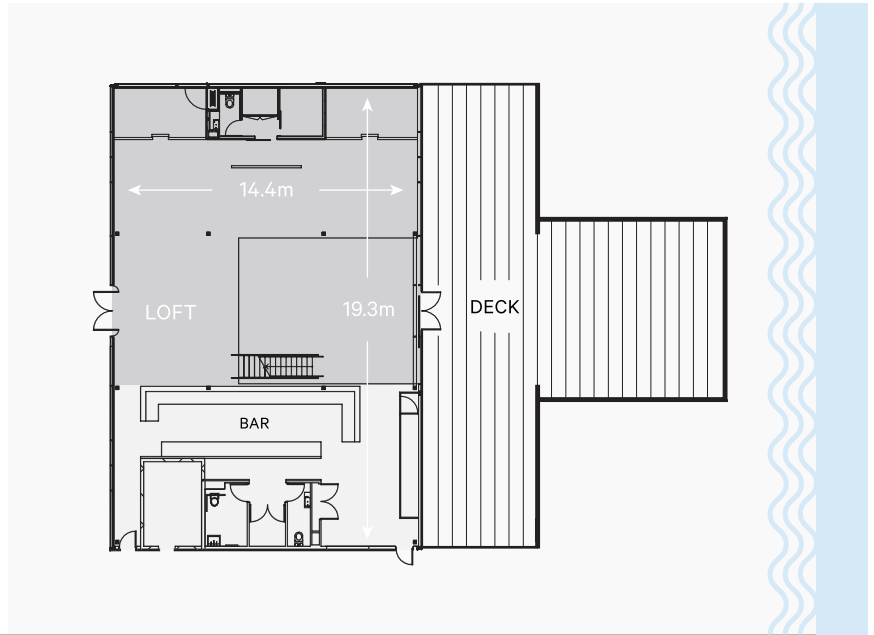
It is a spectacular waterfront venue on the foreshore of Sydney
Harbour, with views of the Harbour Bridge, city skyline and the
Darling Harbour precinct.

WINNER

MEETINGS AND EVENTS INDUSTRY HALL OF FAME
SPECIALTY MEETING VENUE

Jones Bay Wharf - LOFT

- Waterfront location
- Private deck area with Harbour Bridge / City views
- Fully air-conditioned
- Features polished wooden floors, white gold mosaic tiles and a marble bar
- Private entrance for VIP arrival
- Natural light
- Telephone lines
- Internet access
- Lift and disabled access



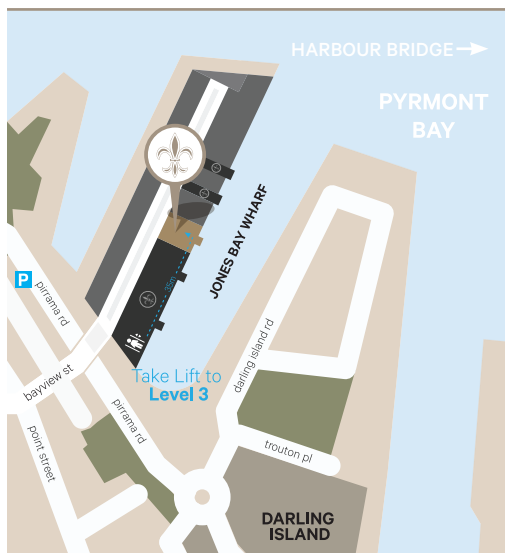
CAPACITIES	BANQUET	COCKTAIL	THEATRE	BOARDROOM	CABARET	CLASSROOM
	180	280	140	50	136	60

Not to scale, capacities subject to event set up requirements

FOOD & CATERING

- AWARD WINNING -

Serving Sydney's best quality produce, from the freshest of seafoods, and the premium cut of meats, we source only the highest standard for you.



LOCATION

The setting offers an event experience on the best harbour in the world, an ideal venue location and a very unique address for your next event.

Only minutes from our Darling Island venue and the Darling Harbour precinct, Doltone House Jones Bay Wharf is within easy walking distance of the CBD and all the attractions that Sydney city has to offer.

The venue may be accessed by boat, water taxi, ferry, light rail, bus or private transport.

Jones Bay Wharf
26-32 Pirrama Road,
Pyrmont. 2009

PARKING

Parking is available directly across the road from the venue in the Jones Bay Wharf Car Park or at The Star. You may enter the venue from the street level stairs or dedicated lift on Pirrama Road.